



Lithium Solar Energizer

USER MANUAL

v2.4 12/25

S20

S30

S60

S80

S120



Published by:
Gallagher Group Limited
Kahikatea Drive, Private Bag 3026
Hamilton, New Zealand

am.gallagher.com
Copyright© Gallagher Group Limited 2025
All rights reserved.



SCAN FOR
WARRANTY
INFORMATION

DISCLAIMER: Whilst every effort has been made to ensure accuracy, neither Gallagher Group Limited nor any employee of the company shall be liable on any ground whatsoever to any party in respect of decisions or actions they may make as a result of using this information.

In accordance with the Gallagher policy of continuing development, design and specifications are subject to change without notice.

Developed and manufactured by Gallagher Group Limited, and ISO 9001 2015 Certified Supplier.

Contents

Energizer overview	4
Installation instructions.....	5
Accessories	9
Tips & Troubleshooting.....	10
Care & Maintenance	10
Product specifications	11
Approvals & standards.....	12

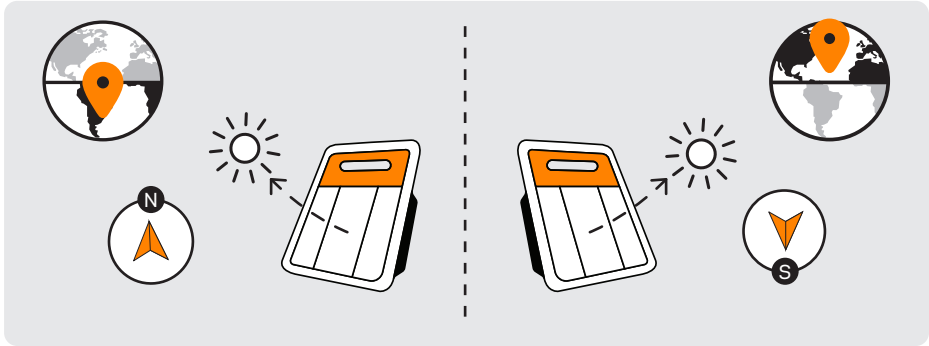


1	Solar Panel	Keep clean so battery will charge from the sun
2	*Power	Off (0) or On (1) S120 Only : Off (0), Domestic (1), or Wildlife (2)
3	Flat Battery indicator LED	Red - Battery is very low or flat. See Tips & Troubleshooting on p. 11
4	Fence Indicator LED	Green flashing - Energizer is OK Red flashing - Fence voltage is low (S60/S80/S120 only) See Tips & Troubleshooting on p. 10
5	Fence Terminal	Connects to fence
6	Earth Terminal	Connects to earth/ground stake

*For more information on power modes see Step 5. Turn on energizer on p. 9
S20, S30, S60, S80 S120



- 1 
- 2 



Important: Charge the battery for 1 day in full daylight before first use.

The solar panel should face towards the equator. i.e. in the northern hemisphere, panel faces south, in the southern hemisphere, panel faces north.

Step 1. Charge the Battery

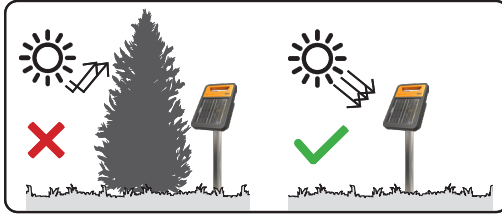
GALLAGHER RECOMMENDS CHARGING BEFORE USE

Step 2. Connect Earth and Fence leads



Step 3. Mount the Energizer

ENG



Caution:

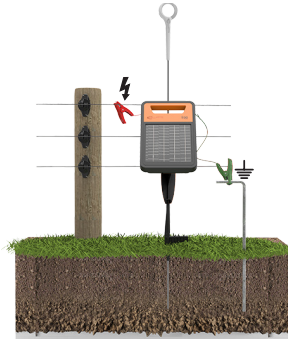
Do not install energizer on the ground.
Never leave the energizer face down.
Do not install where long grass can cover any part of the solar panel.

Mounting Options

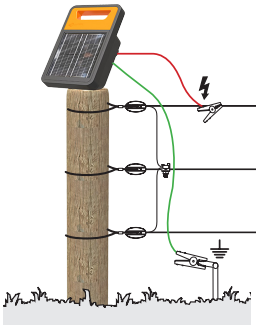
a.



b.



c.



d.

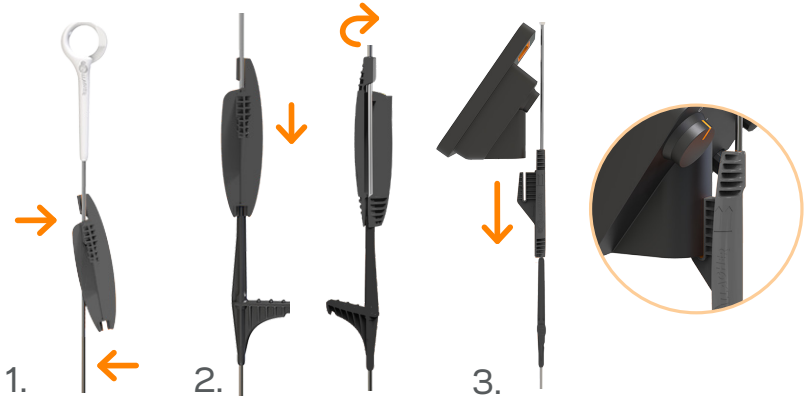


a.



b.

Note: Ring Top Posts are not recommended for mounting the S60/S80/S120.



c.



- d. **Note:** Earth rods are not recommended for mounting the S120.



Step 4. Connect Earth and Fence leads to fence



Earthing for Step 3 (a. b. c.)

Earthing for Step 3 (d.)

- Connect green terminal to the earth rod inserted at least 2 ft (60cm) into the ground.
- Connect red terminal to fence line.

Important: For Step 3d. ONLY, the earth lead can be connected to the earth screw on the back of the energizer which is touching the earth rod.

Step 5. Turn on energizer

S20 S30 S60 S80

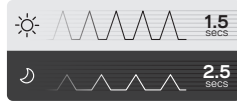


The energizer will automatically slow the pulse rate from 1.5 seconds during the day to 2.5 seconds at night, to conserve the battery while live stock are less active.

S120



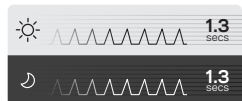
1



Domestic Mode pulses every 1.5 seconds during the day at full power and pulses every 2.5 seconds at night at half power.



2



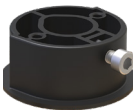
Wildlife Mode pulses every 1.3 seconds during the day and night at half power.



		Energizer is working
		Fence voltage is low (S60/S80/S120 only)
		Battery is flat

3

Accessories



Install the energizer onto a wooden post or an earth stake using the optional Wood Post/Earth (Ground) Rod Mount.

G57112



Install the energizer on a Gallagher Ring Top Post using the optional Ring Top Post Mount.

G57111

Behaviour	Problem	Solutions
Battery LED is solid red and Energizer has stopped ticking	Battery capacity is flat due to insufficient sunlight. Battery needs charging.	<ul style="list-style-type: none"> ▪ Ensure energizer is getting enough sun and facing the correct direction. ▪ Ensure energizer is in direct sunlight.
Energizer pulsing slow	Battery capacity is low due to insufficient sunlight.	<ul style="list-style-type: none"> ▪ Turn energizer OFF for 3 days, leave in the sun to charge internal battery.
Energizer is ON but not operating - No LEDs light up.	Battery is below 6% or the unit is faulty.	<ul style="list-style-type: none"> ▪ Turn energizer OFF for 1 day, leave in the sun to charge internal battery. ▪ Turn energizer ON, if still not operating, take the energizer to a Gallagher Authorised Service Centre.
Fence Indicator LED is flashing red (S60/S80/S120 only)	The voltage on the fence is low and not sufficient for animal control.	<ul style="list-style-type: none"> ▪ Remove any foliage/debris from the fence line. ▪ Check for broken insulators.
Battery LED flashing red.	Temperature protection state. Energizer stopped pulsing to protect internal battery	<ul style="list-style-type: none"> ▪ Energizer will self-recover when temperature returns to normal operating range.
Stock getting out	No or low voltage on fence	<ul style="list-style-type: none"> ▪ Check energizer isn't faulty; <ul style="list-style-type: none"> - disconnect from fence and earth - measure across fence and earth terminals with a Gallagher Fence Voltmeter - if less than 5 kV return energizer for service - if more than 5 kV, check the fence for shorts. Add a supplementary ground rod.

- Keep solar panel clean - periodically use a soft cloth with water and a mild detergent.
- Do not expose the energizer to excessive temperatures or fire. (Below -20°C or above 70°C).

Important Battery Information

Recharging the battery	Switch the energizer off. Place in sunlight for 3 days to charge battery.
Storing the energizer	Switch the energizer off. Store in a cool, dry, dark, ventilated area to minimise battery current. Recharge the battery before and after seasonal storage.
Leaking batteries	If battery fluid comes in contact with : Eyes - flush the affected area with water for at least 15 minutes. Ensure adequate flushing by separating the eyelids with fingers. Call a physician. Skin - immediately flush with water and/or soap.
Battery replacement or disposal	This energizer contains a Lithium battery which is not user replaceable. The lithium battery must be replaced by a trained professional using a Gallagher approved lithium battery. Return energizer to a Gallagher Authorised Service Centre for battery replacement or disposal.



Important:

- If the battery charge drops to 30% or less, the day pulse rate drops to 3.0 seconds and the night pulse rate will drop to 5.0 seconds.
- Do not dispose of the energizer in a fire.

6

Product specifications

	S20	S30	S60	S80	S120
Battery Type	Lithium 3.2V 6 Ah	Lithium 3.2V 12 Ah	Lithium 3.2V 12 Ah	Lithium 3.2V 24 Ah	Lithium 3.2V 24 Ah
Output voltage (no load)	9.2 kV	9.3 kV	8.8 kV	9.0 kV	9.4 kV
Stored Energy	0.21 J	0.3 J	0.6 J	0.8 J	1.2 J
Average Current (Day)	67 mA	100 mA	300 mA	400 mA	300 mA
Peak Current	325 mA	275 mA	350 mA	450 mA	440 mA
Dimensions (HxWxD)	190mm x 171mm x 151mm		250mm x 200mm x 195mm		270 x 367 x 192mm
Weight	1.2 kg / 2.65 lbs	1.4 kg / 3.09 lbs	1.9 kg / 4.19 lbs	2.2 kg / 4.85 lbs	3.0 kg / 6.61 lbs
Operating Temperature	-10°C to +50°C / 10°F to +120°F				
Storage Temperature	-20°C to +70°C / -4°F to +158°F				
IP Rating	IPX4				



Important: Changes or modifications not expressly approved by Gallagher Group Limited could void the user's authority to operate this equipment.

FCC

This device complies with Part 15 of the FCC Rules. Operation is subject to the following two conditions: (1) this device may not cause harmful interference, and (2) this device must accept any interference received, including interference that may cause undesired operation.

This equipment has been tested and found to comply with the limits for a Class B digital device, pursuant to part 15 of the FCC Rules. These limits are designed to provide reasonable protection against interference in a residential installation. This equipment generates, uses and can radiate radio frequency energy and, if not installed and used in accordance with the instructions, may cause interference to radio communications. However, there is no guarantee that interference will not occur in a particular installation. If this equipment does cause interference to radio or television reception, which can be determined by turning the equipment off and on, the user is encouraged to try to correct the interference by one or more of the following measures:

- Reorient or relocate the receiving antenna.
- Increase the separation between the equipment and receiver.
- Consult the dealer or an experience radio/TV technician for help.

Waste Electrical And Electronic Equipment



This symbol on the product indicates that this product and with special care, the battery, must not be disposed of with other waste. Instead, it is your responsibility to dispose of your waste equipment by handing it over to a designated collection point for the recycling of waste electrical and electronic equipment. The separate collection and recycling of your waste equipment at the time of disposal will help conserve natural resources and ensure that it is recycled in a manner that protects human health and the environment. For more information about where you can drop off your waste equipment for recycling, please contact your local city recycling office or the dealer from whom you purchased the product.